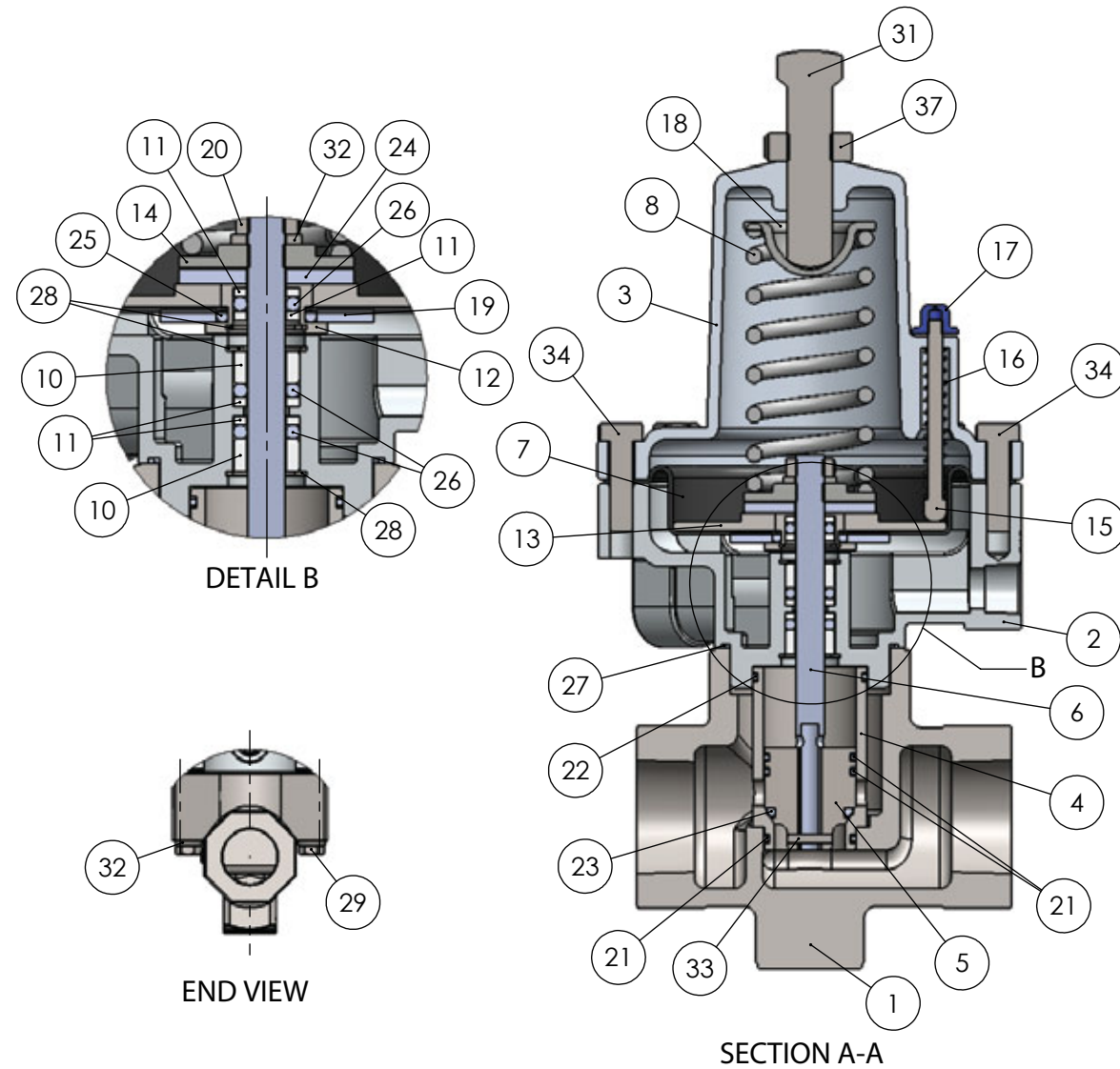


The Combustex Series 100



C/I Standard Safety Shutoff Valve



Item	Qty.	Description	Part No.
1	1	Valve Body	100-001-1
2	1	Bonnet	100-002-1
3	1	Spring Case (Standard Model)	100-003-1
4	1	Cage	100-005-1
5	1	Valve Plug	100-006-1
6	1	Valve Stem	100-013-2
7	1	Diaphragm	100-014-1
8	1	Valve Spring - 3-15 PSI (Standard Model)	100-015-1
9	1	Valve Spring - 6-30 PSI (Standard Model)	100-015-2
10	2	Stem Seal Bushing	100-018-1
11	4	Stem Seal Retainer Ring	100-019-1
12	1	Diaphragm Guide	100-022-2
13	1	Diaphragm Spring Plate	100-025-2
14	1	Shaft Spring Plate	100-026-1
15	1	Position Indicator Shaft (Standard Model)	100-029-1
16	1	Indicator Shaft Spring	100-030-1
17	1	Indicator Cap	100-031-1
18	1	Spring Adjustment Plate	100-039-1

Item	Qty.	Description	Part No.
19	1	Diaphragm Washer	100-024-2
20	1	Shaft Lock Nut	NHJF-0313-CS
21	3	Inner & Lower Cage Seal #020	O020-80H
22	1	Upper Cage Seal #024	O024-80H
23	1	Valve Seat Seal #114	O114-90H
24	1	Diaphragm Guide Spacer	100-045-1
25	1	Diaphragm Guide Outer Seal #114	O114-80H
26	3	Stem Packing Seal #203	O20380H
27	1	Body Seal #030	O030-80H
28	4	Packing Snap Ring	SRI-0625
29	2	Body Bolt	BHC-0313-2250-B7M
37	1	Spring Adjustment Jam Nut	NHJF-0500-CS
31	1	Spring Adjustment Set Screw	BSQOF-0500-2000-CS
32	3	Lock Washer	WL-0313-CS
33	1	Plug Retainer Pin	PG-0094-0500-316
34	8	Spring Case Bolt	BHC-0250-1000-CS
35	1	Specification Tag	100-042-1
36	4	Specification Tag Drive Screw	PD-0125-0125-CS

Contact Us Toll Free: 1-855-226-2582

Phone: (403) 342-4494 | Email: sales@combustex.com | Web: www.combustex.com